

WORKING WITH OUR STAKEHOLDERS

Consulting with communities and governments and implementing good environmental practice is fundamental to obtaining and retaining our licences to operate.

AuruMar is committed to proactive engagement with stakeholders. This commitment has been demonstrated in operations in New Zealand in partnership with Seafield Resources Ltd.

During operation in New Zealand there has been extensive consultation with many organisations, groups and individuals who have an interest in the project. These include:

- Local Iwi
- Local District Councils
- The Department of Conservation
- Buller Conservation Group
- Ngai Tahu Development Corporation
- Local fishing industry representatives
- Relevant MPs and Ministers
- Local news media
- Maritime New Zealand

Keeping interested and affected parties informed is critical to our business.



For more information...

AuruMar (Pty) Ltd
PO Box 87 Cape Town 8000
SOUTH AFRICA
info@aurumar.co.za

BIODIVERSITY & MARINE PROTECTED AREAS

Responsible stewardship of biodiversity is fundamental to AuruMar's approach. This means respecting legally designated Protected Areas and World Heritage Sites, identifying key biodiversity areas and managing our impacts on biodiversity.

Biodiversity Impact Management

AuruMar's approach towards biodiversity impact management will be guided by the extensive biological research that has been conducted by De Beers in marine mining concessions off the southern African west coast. It has become standard practice in these concessions to conduct pre-mining baseline biodiversity surveys, as well as ongoing monitoring surveys to demonstrate post-mining recovery.

These biological surveys result in the gathering of unique knowledge about the biodiversity of the marine environments in which we operate.

This data is both difficult and expensive to collect and as a result there are typically large gaps in knowledge within the marine science community. As a result it is AuruMar's intent to engage with marine research institutions and Governments to make available the biodiversity information that is collected.



Biological sampling using a Van Veen Grab

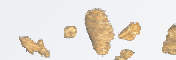
Marine Protected Areas

AuruMar is committed to respecting legally designated Marine Protected Areas and Heritage Sites. In the process of identifying suitable targets, overlap assessments with designated and planned Protected Areas and Heritage Sites are conducted and overlaps with existing and potential areas avoided as far as possible. Where overlap appears likely AuruMar will:

- act in accordance with the defined protected area management plans,
- consult with protected area sponsors and managers, local communities, and other key stakeholders, and
- implement additional programmes, as appropriate.



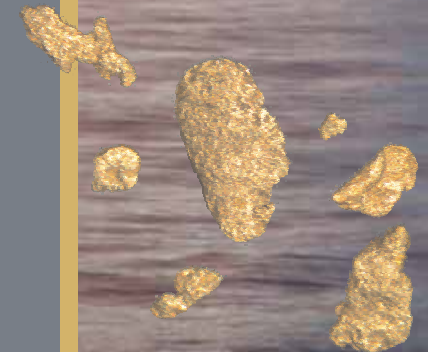
Sampling Vessel in New Zealand



AuruMar

Global exploration for marine placer deposits...

ENVIRONMENTAL MANAGEMENT





WHAT IS AURUMAR?

In 2009, a joint-venture was established between De Beers and AngloGold Ashanti for the purposes of global marine placer exploration and evaluation. AuruMar (Pty) Ltd is the technical services company established to plan and undertake the exploration and evaluation work.

DE BEERS
A PARTNER IN PROGRESS

ANGLOGOLD ASHANTI

DE BEERS MARINE

Partnerships

AuruMar is partnering with De Beers Marine (Pty) Ltd, a company with over 20 years experience in the exploration and mining of marine placer deposits off the west coast of southern Africa. Through this exclusive technical support agreement, AuruMar will benefit from the experience and expertise of De Beers Marine.

Prospecting Technology

Prospecting activities are aimed at identifying, mapping and assessing accumulations of mineral-bearing sediments. AuruMar utilises non-destructive survey technology to map the seabed and identify targets. The viability of targets is then assessed by collecting seabed sediment samples. A purpose-built corer with an associated launch and recovery system was developed through the partnerships between AuruMar, Seafield Resources and De Beers Marine. The system was built in New Zealand, using local expertise as part of our commitment to support businesses within the operating countries.



Purpose-built corer



Sediment core being extruded



OUR ENVIRONMENTAL POLICY

Recognising the critical role of the oceans and the importance of implementing sound practices regarding the environment, communities, safety and health, AuruMar is committed to managing these areas as an integral part of our business.

The environmental commitments and standards of our joint venture partners will be used to guide our environmental management actions.

A copy of our Environmental, Community, Safety & Health Policy is available on request.



IMPACT ASSESSMENTS

Environmental and community requirements are addressed upfront during the process of securing licences to operate.

Typical requirements...

Environmental and social impact assessments are a critical precursor to the issuing of prospecting permit or licences. In New Zealand the following assessments were undertaken by independent specialists:

- Marine Ecological Assessment
- Assessment of Environmental Impacts
- Cultural Impact Assessments: aimed at identifying concerns, issues and values of local communities and identifying appropriate measures to avoid, remedy or mitigate, where practical, any adverse effects of the proposal.



AVOIDING, MINIMISING & MITIGATING OUR IMPACTS

AuruMar applies the principles of integrated environmental management, using the mitigation hierarchy of first avoiding, then minimising and finally mitigating all significant impacts. Two examples are presented below, management of potential sound impacts from equipment used to survey the seabed during prospecting and managing potential marine pollution impacts.

Managing Potential Impacts from Geological Survey

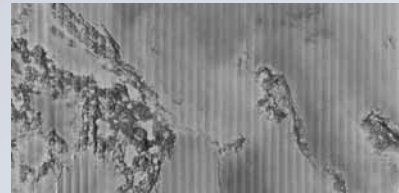
Environmental impacts are assessed during the planning of survey programmes and an assessment of noise impacts has been completed for all the survey tools employed.



De Beers Marine's Autonomous Underwater Vehicle used to gather survey data



Bathymetry Image of Seabed



Side scan sonar image showing texture of the seabed

Marine mammal scientists used the 'source-path' receiver' model to evaluate the potential impacts of survey activities on marine mammals. The following criteria are considered:

- Background noise levels
- Hearing sensitivities
- Sound characteristics of the noise sources
- Sound attenuation or loss over distance.

Conclusions are that the sound characteristics of the equipment used are unlikely to result any significant impact on marine mammals. Despite the low risk of impact, a marine mammal observation programme has been implemented as well as soft-starts for some equipment. Measures are also in place that will cease operations if any unusual mammal behaviour is observed.



Common Dolphins

Avoiding Pollution Impacts

AuruMar is committed to the prevention of pollution through carefully managing harmful substances, wastes and emissions. This includes ensuring that vessels operating on our behalf are compliant with all applicable environmental legislation.

No hazardous chemicals are used during sampling operations at sea. Any leaching work that may be required is done on land through accredited laboratories.

Environmental incidents are carefully logged and actions are implemented to correct any deficiencies to prevent future re-occurrence.

